

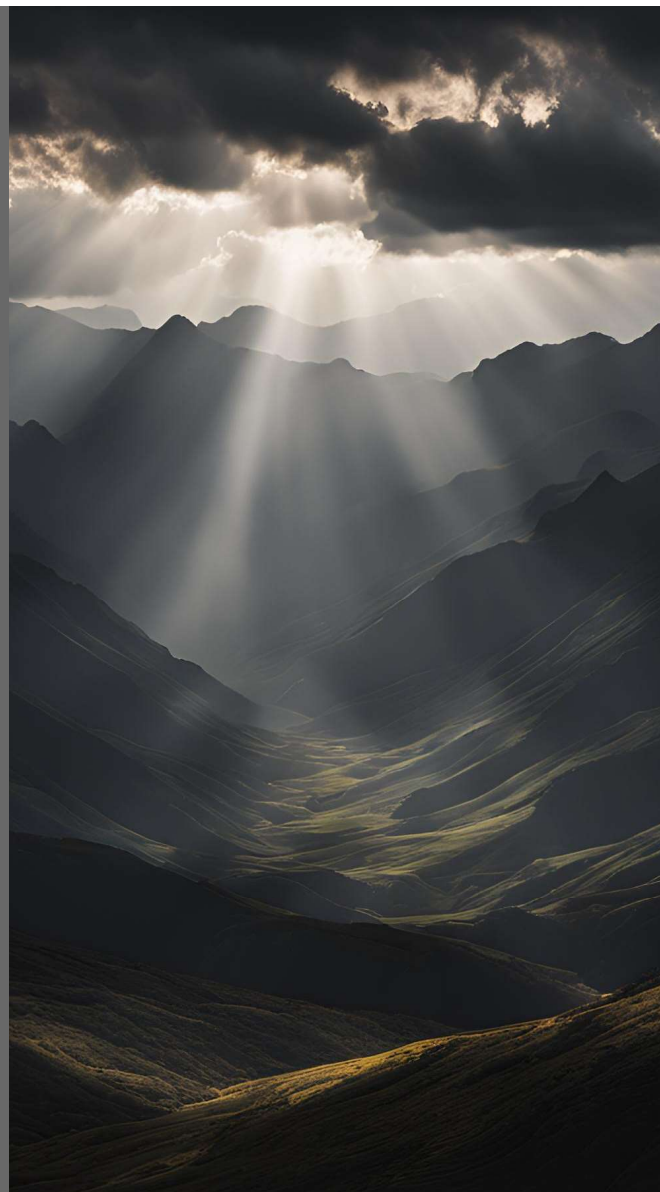


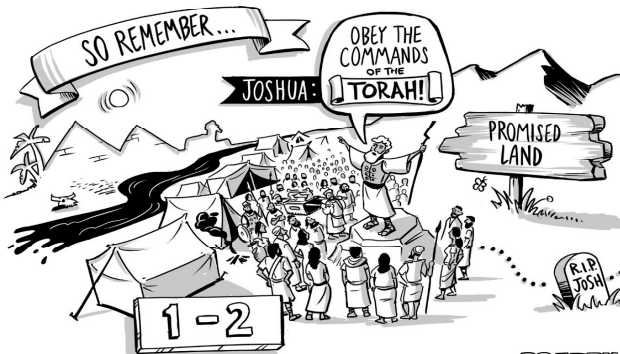
JUDGES

DOWN TO THE DEPTHS

Review

- The person we should want leading us is God!
- When God Gives a command, we must obey 100%
- Cycling Down
- God is Sovereign even when we fail





JUDGES

ISRAEL'S TOTAL FAILURE



THE EMPOWERMENT OF
GOD'S SPIRIT
≠
ENDORSEMENT
OF HUMAN CHOICES



created by the Bible Project

17-21

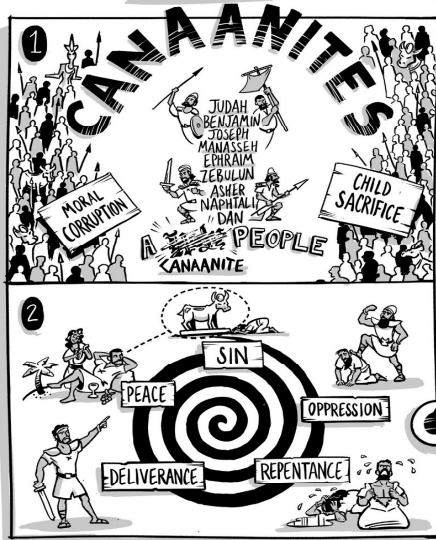
3-16

PRETTY GOOD

OKAY

BAD

WORSE



ISRAEL FAILS TO DRIVE OUT THE CANAANITES



CORRUPTION OF ISRAEL'S JUDGES



"IN THOSE DAYS ISRAEL HAD NO KING AND EVERYONE DID WHAT WAS RIGHT IN THEIR OWN EYES."





JUDGES

DOWN TO THE DEPTHS

Judges 19

In those days, when there was no king in Israel, a certain Levite was sojourning in the remote parts of the hill country of Ephraim, **who took to himself a concubine** from Bethlehem in Judah. 2 And his concubine was unfaithful to him, and she went away from him to her father's house at Bethlehem in Judah, and was there some four months.

Judges 19

3 Then her husband arose and went after her, to speak kindly to her and bring her back. He had with him his servant and a couple of donkeys. And she brought him into her father's house. And when the girl's father saw him, he came with joy to meet him. 4 And his father-in-law, the girl's father, made him stay, and he remained with him three days. So they ate and drank and spent the night there.

The background of the slide is a dark, atmospheric landscape featuring silhouetted mountain ranges. A bright light source, likely the sun, is positioned behind the mountains in the upper center, creating a powerful sunburst effect with rays of light filtering through the clouds. The overall color palette is dark, with shades of grey, black, and muted blue, punctuated by the bright white and yellow of the light source.

Judges 19

5 And on the fourth day they arose early in the morning, and he prepared to go, but the girl's father said to his son-in-law, "Strengthen your heart with a morsel of bread, and after that you may go." 6 So the two of them sat and ate and drank together.

Judges 19

And the girl's father said to the man, "Be pleased to spend the night, and let your heart be merry." 7 And when the man rose up to go, his father-in-law pressed him, till he spent the night there again. 8 And on the **fifth day** he arose early in the morning to depart. And the girl's father said, "Strengthen your heart and wait until the day declines." **So they ate, both of them.**

Judges 19

9 And when the man and his concubine and his servant rose up to depart, his father-in-law, the girl's father, said to him, "Behold, now the day has waned toward evening. Please, spend the night. Behold, the day draws to its close. Lodge here and let your heart be merry, and tomorrow you shall arise early in the morning for your journey, and go home." 10 But the man would not spend the night.



Judges 19

He rose up and departed and arrived opposite **Jebus (that is, Jerusalem)**. He had with him a couple of saddled donkeys, and his concubine was with him. 11 When they were near Jebus, the day was nearly over, and the servant said to his master, “Come now, let us turn aside to this city of the Jebusites and spend the night in it.”

The background of the slide is a dark, atmospheric landscape featuring silhouetted mountain ranges. A bright light source, likely the sun, is positioned behind the mountains in the upper center, creating a powerful sunburst effect with rays of light filtering through the clouds and illuminating the scene from above.

Judges 19

12 And his master said to him, **“We will not turn aside into the city of foreigners, who do not belong to the people of Israel, but we will pass on to Gibeah.”** 13 And he said to his young man, **“Come and let us draw near to one of these places and spend the night at Gibeah or at Ramah.”** 14 So they passed on and went their way.



Judges 19

And the sun went down on them near Gibeah, which belongs to Benjamin, 15 and they turned aside there, to go in and spend the night at Gibeah. And he went in and sat down in the open square of the city, for **no one took them into his house to spend the night.**

The background of the slide is a dark, atmospheric landscape featuring silhouetted mountain ranges. A bright light source, likely the sun, is positioned behind the mountains in the upper center, creating a powerful sunburst effect with rays of light extending across the sky. The overall color palette is dark, with shades of grey, black, and muted blue, punctuated by the bright white and yellow of the light source.

Judges 19

16 And behold, an **old man** was coming from his work in the field at evening. The man was from the hill country of Ephraim, and he was sojourning in Gibeah. The men of the place were Benjaminites. 17 And he lifted up his eyes and saw the traveler in the open square of the city. And the old man said, **“Where are you going? And where do you come from?”**

The background of the slide is a dark, atmospheric landscape featuring silhouetted mountain ranges. A bright light source, likely the sun, is positioned behind the mountains in the upper center, creating a powerful sunburst effect with rays of light filtering through the clouds and illuminating the scene from above.

Judges 19

18 And he said to him, “We are passing from Bethlehem in Judah to the remote parts of the hill country of Ephraim, from which I come. **I went to Bethlehem in Judah, and I am going to the house of the Lord, but no one has taken me into his house.**

19 We have straw and feed for our donkeys, with bread and wine for me and your female servant and the young man with your servants. There is no lack of anything.”

The background of the slide is a dark, atmospheric landscape featuring silhouetted mountain ranges. A bright light source, likely the sun, is positioned behind the mountains in the upper center, creating a powerful sunburst effect with rays of light extending across the sky. The overall color palette is dark, with deep blues, greys, and blacks, punctuated by the bright white and yellow of the light source.

Judges 19

20 And the old man said, "Peace be to you; I will care for all your wants. **Only, do not spend the night in the square.**" 21 So he brought him into his house and gave the donkeys feed. And they washed their feet, and ate and drank.



Judges 19

22 As they were making their hearts merry, behold, the men of the city, **worthless fellows**, surrounded the house, beating on the door. And they said to the old man, the master of the house, “**Bring out the man who came into your house, that we may know him.**” 23 And the man, the master of the house, went out to them and said to them, “No, my brothers, do not act so wickedly; since this man has come into my house, **do not do this vile thing.**”

The background of the slide is a dark, atmospheric landscape featuring silhouetted mountain ranges. A bright light source, likely the sun, is positioned behind the mountains in the upper center, creating a powerful sunburst effect with rays of light filtering through the clouds. The overall color palette is dark, with shades of grey, black, and muted earth tones, punctuated by the bright white and yellow of the light and text.

Judges 19

24 Behold, here are my virgin daughter and his concubine. Let me bring them out now. Violate them and do with them what seems good to you, but against this man do not do this outrageous thing.” 25 But the men would not listen to him.

The background of the slide is a dark, atmospheric landscape featuring silhouetted mountain ranges. A bright light source, likely the sun, is positioned behind the mountains in the upper center, creating a powerful sunburst effect with rays of light extending across the sky. The overall color palette is dark, with shades of grey, black, and muted blue, punctuated by the bright white and yellow of the light source.

Judges 19

So the man seized his concubine and made her go out to them. **And they knew her and abused her all night until the morning.** And as the dawn began to break, they let her go. 26 And as morning appeared, the woman came and fell down at the door of the man's house where her master was, until it was light.

Judges 19

27 And her master rose up in the morning, and when he opened the doors of the house and went out to go on his way, behold, there was his concubine lying at the door of the house, with her hands on the threshold. 28 He said to her, "Get up, let us be going." **But there was no answer.** Then he put her on the donkey, and the man rose up and went away to his home.



Judges 19

29 And when he entered his house, he took a knife, and taking hold of his concubine he divided her, limb by limb, into twelve pieces, and sent her throughout all the territory of Israel. 30 And all who saw it said, **“Such a thing has never happened or been seen from the day that the people of Israel came up out of the land of Egypt until this day; consider it, take counsel, and speak.”**

Judges 20

Then all the people of Israel came out, from Dan to Beersheba, including the land of Gilead, and the congregation assembled as one man to the Lord at Mizpah. 2 And the chiefs of all the people, of all the tribes of Israel, presented themselves in the assembly of the people of God, 400,000 men on foot that drew the sword.



Judges 20

And the people of Israel said, **“Tell us, how did this evil happen?”** ...

...7 Behold, you people of Israel, all of you, **give your advice and counsel here.”**

Judges 20

8 And all the people arose as one man, saying, “None of us will go to his tent, and none of us will return to his house. 9

But now this is what we will do to Gibeah: we will go up against it by lot, 10 and we will take ten men of a hundred throughout all the tribes of Israel, and a hundred of a thousand, and a thousand of ten thousand, to bring provisions for the people, **that when they come they may repay Gibeah of Benjamin for all the outrage that they have committed in Israel.”**



Judges 20

12 And the tribes of Israel sent men through all the tribe of Benjamin, saying, “What evil is this that has taken place among you? 13 Now therefore **give up the men, the worthless fellows in Gibeah, that we may put them to death and purge evil from Israel.**” But the Benjaminites would not listen to the voice of their brothers, the people of Israel.



Judges 20

14 Then the people of Benjamin came together out of the cities to Gibeah to go out to battle against the people of Israel. 15 And the people of Benjamin mustered out of their cities on that day 26,000 men who drew the sword, besides the inhabitants of Gibeah, who mustered 700 chosen men.

Judges 20

18 The people of Israel arose and went up to Bethel and inquired of God, “Who shall go up first for us to fight against the people of Benjamin?” And the Lord said, **“Judah shall go up first.”** 19 Then the people of Israel rose in the morning and encamped against Gibeah. 20 And the men of Israel went out to fight against Benjamin, and the men of Israel drew up the battle line against them at Gibeah.

Judges 20

21 The people of Benjamin came out of Gibeah and destroyed on that day 22,000 men of the Israelites. 22 But the people, the men of Israel, took courage, and again formed the battle line in the same place where they had formed it on the first day. 23 And the people of Israel went up and wept before the Lord until the evening. And they inquired of the Lord, “Shall we again draw near to fight against our brothers, the people of Benjamin?**” And the Lord said, “Go up against them.”**

Judges 20

24 So the people of Israel came near against the people of Benjamin the second day. 25 And Benjamin went against them out of Gibeah the second day, and destroyed 18,000 men of the people of Israel. All these were men who drew the sword. 26 Then all the people of Israel, the whole army, went up and came to Bethel and wept. They sat there before the Lord and fasted that day until evening, and offered burnt offerings and peace offerings before the Lord.



Judges 20

27 And the people of Israel inquired of the Lord... saying,
“Shall we go out once more to battle against our brothers, the people of Benjamin, or shall we cease?” And the Lord said,
“Go up, for tomorrow I will give them into your hand.”

The background of the slide is a dark, atmospheric landscape featuring silhouetted mountain ranges. A bright light source, likely the sun, is positioned behind the mountains in the upper center, creating a powerful sunburst effect with rays of light filtering through the clouds. The overall color palette is dark, with shades of grey, black, and muted earth tones, punctuated by the bright white and yellow of the light source.

Judges 20

29 So Israel set men in ambush around Gibeah. 30 And the people of Israel went up against the people of Benjamin on the third day and set themselves in array against Gibeah, as at other times. 31 And the people of Benjamin went out against the people and were drawn away from the city.



Judges 20

32 And the people of Benjamin said, “They are routed before us, as at the first.” But the people of Israel said, “Let us flee and draw them away from the city to the highways.” 33 And all the men of Israel rose up out of their place and set themselves in array at Baal-tamar, and the men of Israel who were in ambush rushed out of their place from Maareh-geba.

Judges 20

34 And there came against Gibeah 10,000 chosen men out of all Israel, and the battle was hard, but the Benjaminites did not know that disaster was close upon them. 35 And the Lord defeated Benjamin before Israel, and the people of Israel destroyed 25,100 men of Benjamin that day. **All these were men who drew the sword.** 36 So the people of Benjamin saw that they were defeated.

Judges 20

The men of Israel gave ground to Benjamin, because they trusted the men in ambush whom they had set against Gibeah. 37 Then the men in ambush hurried and rushed against Gibeah; the men in ambush moved out and struck all the city with the edge of the sword. 38 Now the appointed signal between the men of Israel and the men in the main ambush was that **when they made a great cloud of smoke rise up out of the city 39 the men of Israel should turn in battle.**



Judges 20

Now Benjamin had begun to strike and kill about thirty men of Israel. They said, “Surely they are defeated before us, as in the first battle.” 40 But when the signal began to rise out of the city in a column of smoke, the Benjaminites looked behind them, and behold, **the whole of the city went up in smoke to heaven.** 41 Then the men of Israel turned, and the men of Benjamin were dismayed, for they saw that disaster was close upon them.



Judges 20

42 Therefore they turned their backs before the men of Israel in the direction of the wilderness, but the battle overtook them. And those who came out of the cities were destroying them in their midst. 43 **Surrounding the Benjaminites, they pursued them and trod them down from Nohah as far as opposite Gibeah on the east.**

Judges 21

Now the men of Israel had sworn at Mizpah, **“No one of us shall give his daughter in marriage to Benjamin.”** 2

And the people came to Bethel and sat there till evening before God, and they lifted up their voices and wept bitterly. 3 And they said, “O Lord, the God of Israel, why has this happened in Israel, that today there should be one tribe lacking in Israel?”

Judges 21

4 And the next day the people rose early and built there an altar and offered burnt offerings and peace offerings. 5 And the people of Israel said, **“Which of all the tribes of Israel did not come up in the assembly to the Lord?”** For they had taken a great oath concerning him who did not come up to the Lord to Mizpah, saying, **“He shall surely be put to death.”**

The background of the slide is a dark, atmospheric landscape featuring silhouetted mountain ranges. A bright light source, likely the sun, is positioned behind the mountains in the upper center, creating a powerful sunburst effect with rays of light extending across the sky. The overall color palette is dark, with shades of grey, black, and muted earth tones, punctuated by the bright white and yellow of the light source.

Judges 21

6 And the people of Israel had compassion for Benjamin their brother and said, “One tribe is cut off from Israel this day. 7 **What shall we do for wives for those who are left**, since we have sworn by the Lord that we will not give them any of our daughters for wives?”



Judges 21

8 And they said, **“What one is there of the tribes of Israel that did not come up to the Lord to Mizpah?”** And behold, no one had come to the camp from Jabesh-gilead, to the assembly. 9 For when the people were mustered, behold, not one of the inhabitants of Jabesh-gilead was there.

Judges 21

10 So the congregation sent 12,000 of their bravest men there and commanded them, “Go and strike the inhabitants of Jabesh-gilead with the edge of the sword; also the women and the little ones. 11 This is what you shall do: every male and every woman that has lain with a male you shall devote to destruction.”

The background of the slide is a dark, atmospheric landscape featuring silhouetted mountain ranges. A bright light source, likely the sun, is positioned behind the mountains, creating a powerful sunburst effect with rays of light filtering through the clouds and illuminating the scene from above.

Judges 21

12 And they found among the inhabitants of Jabesh-gilead 400 young virgins who had not known a man by lying with him, and they brought them to the camp at Shiloh, which is in the land of Canaan.

Judges 21

13 Then the whole congregation sent word to the people of Benjamin who were at the rock of Rimmon and proclaimed peace to them. 14 And Benjamin returned at that time. **And they gave them the women whom they had saved alive of the women of Jabesh-gilead, but they were not enough for them.** 15 And the people had compassion on Benjamin because the Lord had made a breach in the tribes of Israel.

The background of the slide is a dark, atmospheric landscape featuring silhouetted mountain ranges. A bright light source, likely the sun, is positioned behind the mountains, creating a powerful sunburst effect with rays of light filtering through the clouds and illuminating the scene from above.

Judges 21

16 Then the elders of the congregation said, “What shall we do for wives for those who are left, since the women are destroyed out of Benjamin?” 17 And they said, “There must be an inheritance for the survivors of Benjamin, that a tribe not be blotted out from Israel.

The background of the slide is a dark, atmospheric landscape featuring silhouetted mountain ranges. A bright light source, likely the sun, is positioned behind the mountains in the upper center, creating a powerful sunburst effect with rays of light filtering through the clouds and illuminating the scene from above.

Judges 21

18 Yet we cannot give them wives from our daughters.” For the people of Israel had sworn, **“Cursed be he who gives a wife to Benjamin.”** 19 So they said, “Behold, there is the yearly feast of the Lord at Shiloh, which is north of Bethel, on the east of the highway that goes up from Bethel to Shechem, and south of Lebonah.”



Judges 21

20 And they commanded the people of Benjamin, saying, **“Go and lie in ambush in the vineyards 21 and watch.** If the daughters of Shiloh come out to dance in the dances, then come out of the vineyards and snatch each man his wife from the daughters of Shiloh, and go to the land of Benjamin.

The background of the slide is a dark, atmospheric landscape featuring silhouetted mountain ranges. A bright light source, likely the sun, is positioned behind the mountains in the upper center, creating a powerful sunburst effect with rays of light filtering through the clouds. The overall tone is somber and majestic.

Judges 21

22 And when their fathers or their brothers come to complain to us, we will say to them, ‘Grant them graciously to us, because we did not take for each man of them his wife in battle, neither did you give them to them, else you would now be guilty.’”

The background of the slide is a dark, atmospheric landscape featuring silhouetted mountain ranges. A bright light source, likely the sun, is positioned behind the mountains, creating a powerful sunburst effect with rays of light filtering through the clouds and illuminating the scene from above.

Judges 21

23 And the people of Benjamin did so and took their wives, according to their number, from the dancers whom they carried off. Then they went and returned to their inheritance and rebuilt the towns and lived in them. 24 And the people of Israel departed from there at that time, every man to his tribe and family, and they went out from there every man to his inheritance.

A dramatic landscape featuring a range of dark, silhouetted mountains under a sky with heavy clouds. Sunbeams (crepuscular rays) are visible, shining down from the top center of the frame. The overall mood is somber and majestic.

Judges 21

**25 In those days there was no king in Israel.
Everyone did what was right in his own eyes.**

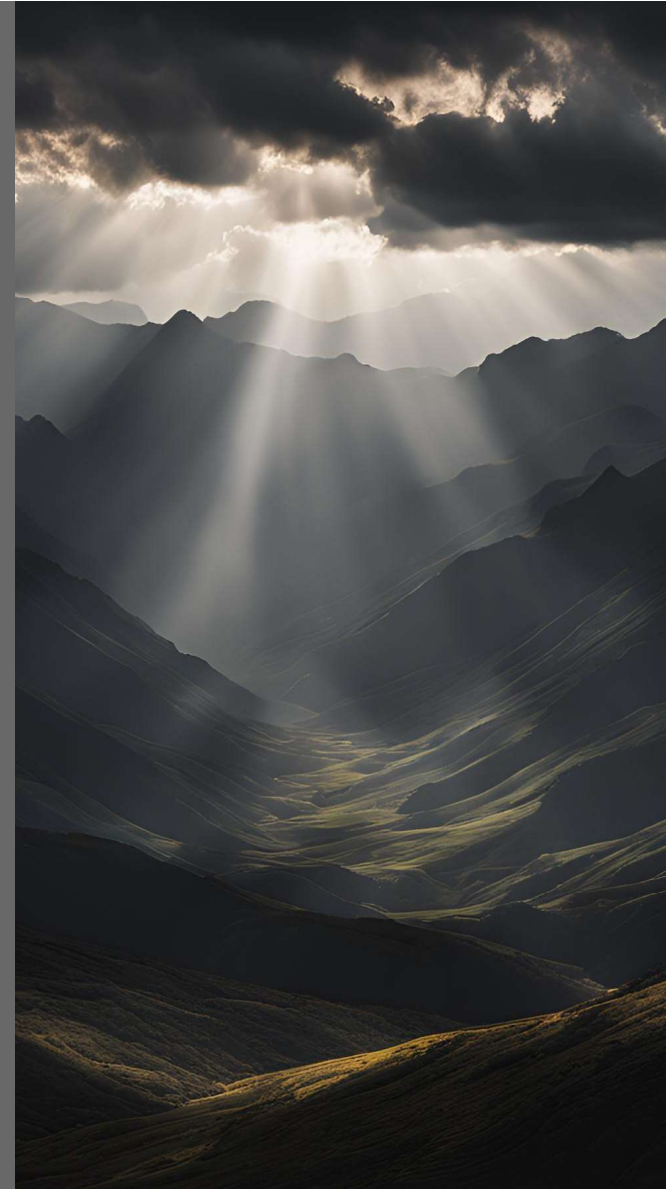
The background of the slide is a dark, atmospheric landscape featuring silhouetted mountain ranges. A bright light source, likely the sun, is positioned behind the mountains in the upper center, creating a powerful sunburst effect with rays of light extending across the sky. The overall color palette is dark, with shades of grey, black, and muted earth tones, punctuated by the bright white and yellow of the light source.

Ruth 1

In the days when the judges ruled there was a famine in the land, and a man of Bethlehem in Judah went to sojourn in the country of Moab, he and his wife and his two sons

So What?

- When tragic things happen we should not blame God
- Sin will always take us further
- God remains faithful
- God has good plans



TIME OF GIVING

Online giving is also available on our church website,
www.westmiddlebury.org, and on our Tithely app.

Offering boxes are
available at both entrances.

2 Corinthians 9:7

