



JUDGES

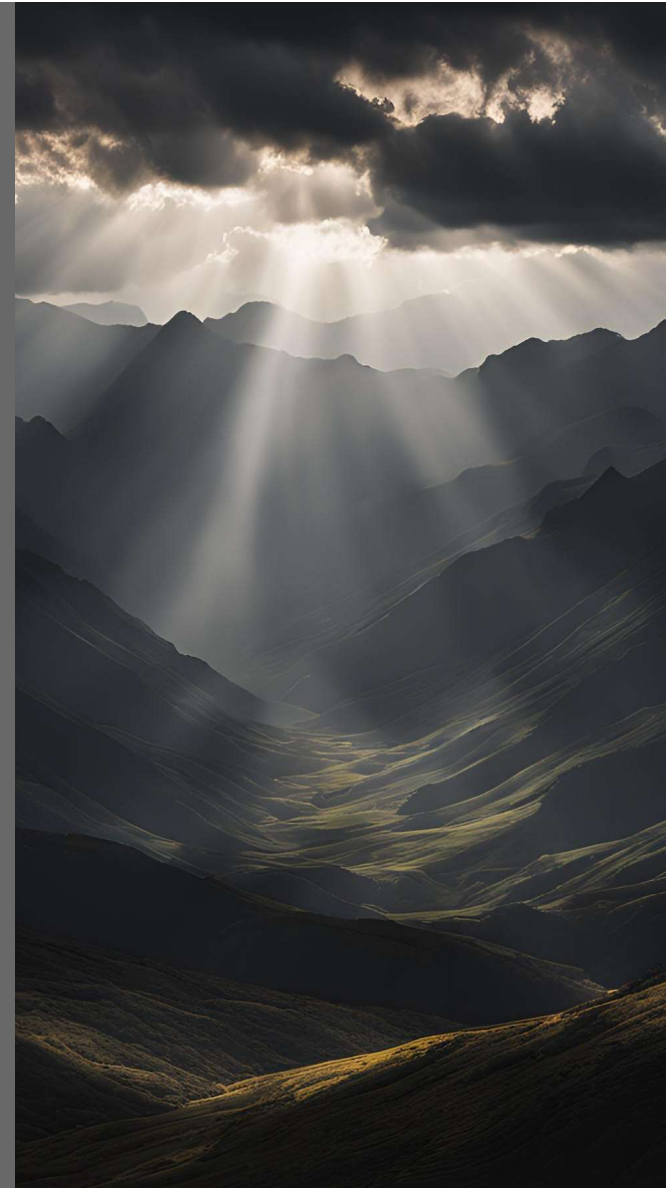
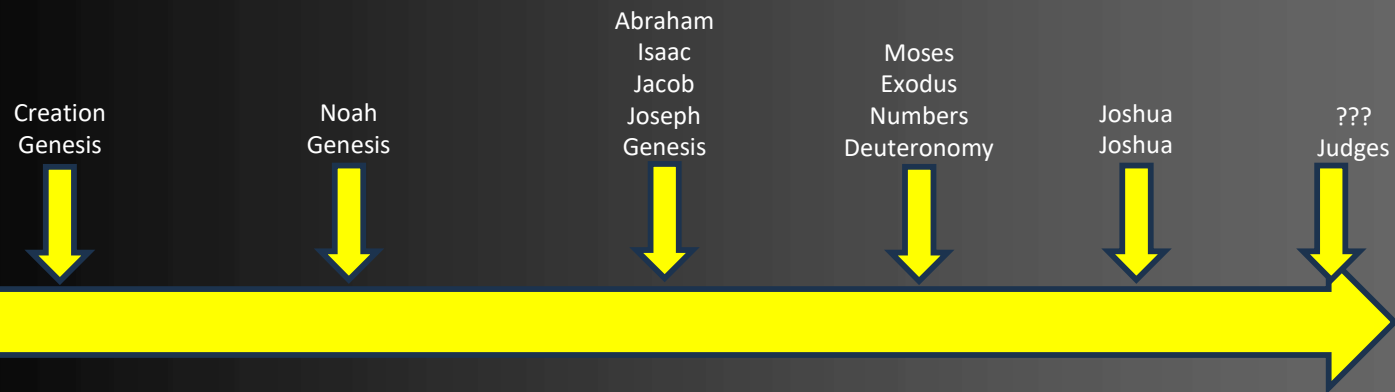
DOWN TO THE DEPTHS



JUDGES

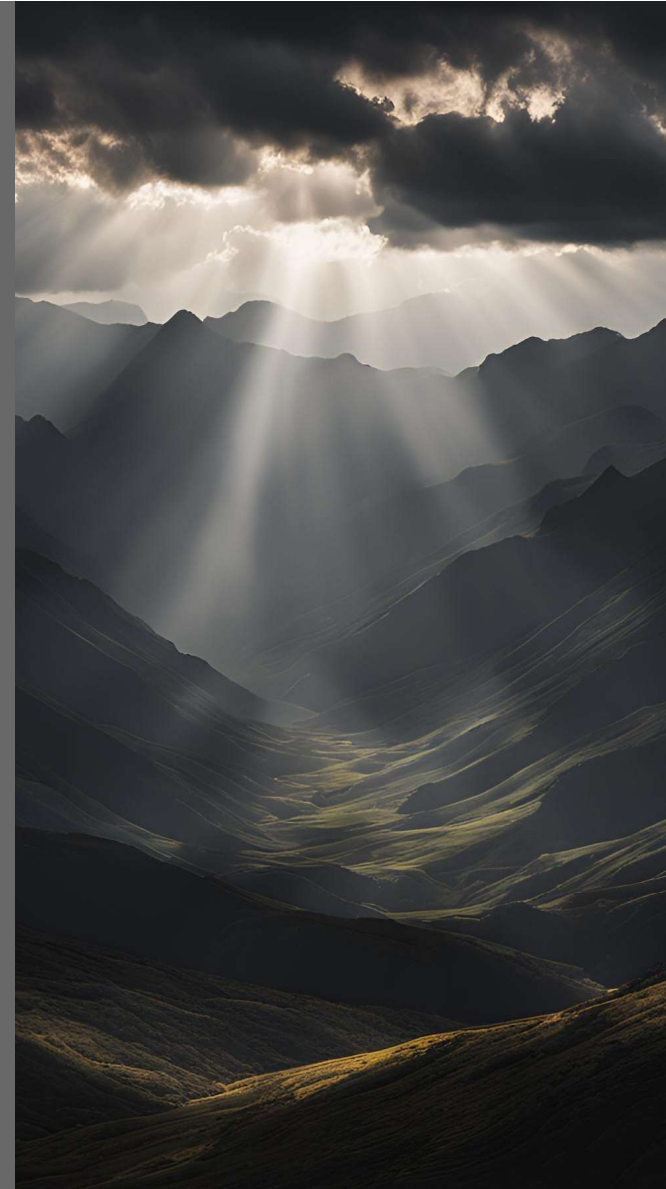
DOWN TO THE DEPTHS

Review



Review

- The person we should want leading us is God!
- When God Gives a command, we must obey 100%
- Cycling Down
- The birth of the chosen Nazirite child



The background of the slide is a dark, atmospheric landscape featuring silhouetted mountain ranges. A bright light source, likely the sun, is positioned behind the mountains in the upper center, creating a powerful sunburst effect with rays of light extending across the sky. The overall color palette is dark, with shades of grey, black, and muted blue, punctuated by the bright white and yellow of the light source.

Judges 14

Samson went down to Timnah, and at Timnah he saw one of the daughters of the Philistines. 2 Then he came up and told his father and mother, **“I saw one of the daughters of the Philistines at Timnah. Now get her for me as my wife.”**

The background of the slide is a dark, atmospheric landscape featuring silhouetted mountains under a sky with a bright sunburst or light rays breaking through clouds. The overall tone is dramatic and inspirational.

Judges 13:5

**5 for behold, you shall conceive and bear a son.
No razor shall come upon his head, for the child
shall be a Nazirite to God from the womb, **and he
shall begin to save Israel from the hand of the
Philistines.”****



Judges 14

3 But his father and mother said to him, “Is there not a woman among the daughters of your relatives, or among all our people, that you must go to take a wife from the uncircumcised Philistines?” But Samson said to his father, “Get her for me, for she is right in my eyes.**”**

A dramatic landscape featuring a range of dark, silhouetted mountains under a sky with heavy clouds. Sunbeams are streaming down from a break in the clouds, creating a powerful and atmospheric scene. The overall tone is somber yet hopeful, with the light breaking through the darkness.

Judges 21:25

In those days there was no king in Israel.
Everyone did what was right in his own eyes.

The background of the slide is a dramatic landscape featuring a range of dark, silhouetted mountains under a sky with heavy, dark clouds. Sunbeams are breaking through the clouds, creating a strong contrast and illuminating the scene. The overall tone is somber yet hopeful, with the light from the sunbeams suggesting a divine presence or intervention.

Judges 14

4 His father and mother did not know that it was from the Lord, **for he was seeking an opportunity against the Philistines.** At that time the Philistines ruled over Israel.



Judges 14

5 Then Samson went down with his father and mother to Timnah, and they came to the vineyards of Timnah. And behold, a young lion came toward him roaring. 6 Then the Spirit of the Lord rushed upon him, and although he had nothing in his hand, **he tore the lion in pieces as one tears a young goat.**

The background of the slide is a dramatic landscape featuring a range of dark, silhouetted mountains under a sky filled with heavy, dark clouds. Bright rays of light, resembling sunlight breaking through, emanate from behind the clouds in the upper center, creating a powerful and atmospheric effect. The overall color palette is dark, with shades of grey, black, and muted yellow from the light rays.

Judges 14

But he did not tell his father or his mother what he had done. 7 Then he went down and talked with the woman, and she was right in Samson's eyes.

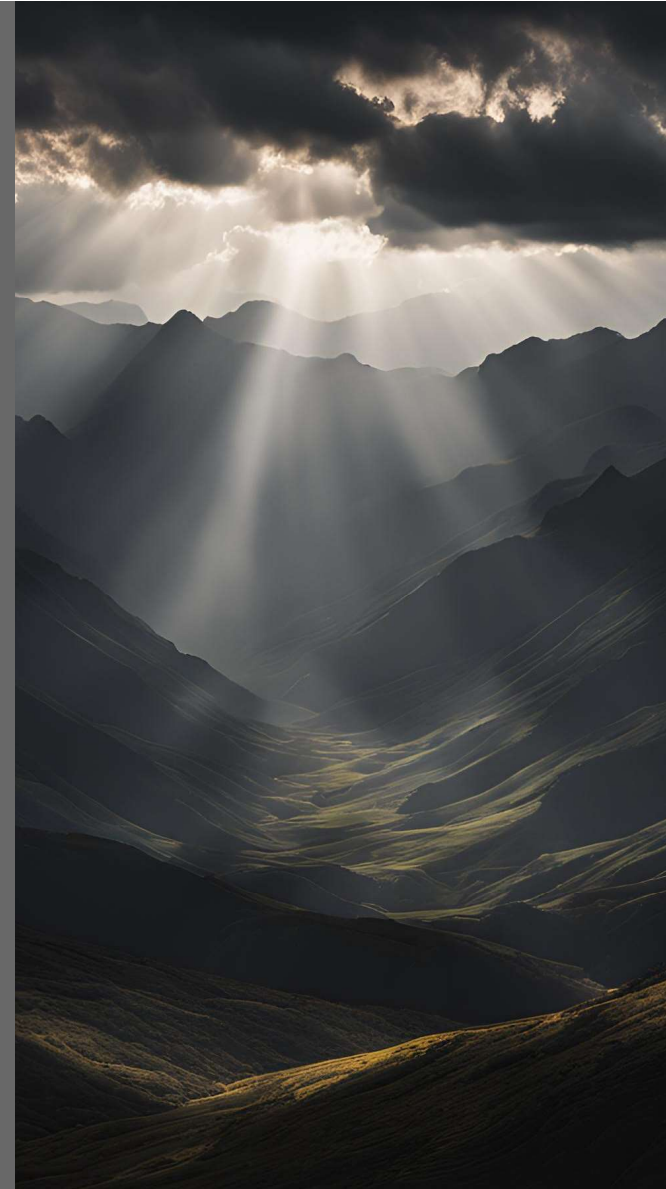


Judges 14

8 After some days he returned to take her. And he turned aside to see the carcass of the lion, and behold, there was a swarm of bees in the body of the lion, and honey. 9 **He scraped it out into his hands and went on, eating as he went.** And he came to his father and mother and gave some to them, and they ate. **But he did not tell them that he had scraped the honey from the carcass of the lion.**

Nazerite Vow

- ☐ No Wine, Vinegar, or Grapes
- ☐ No touching a dead body
- ☒ Cannot cut his hair



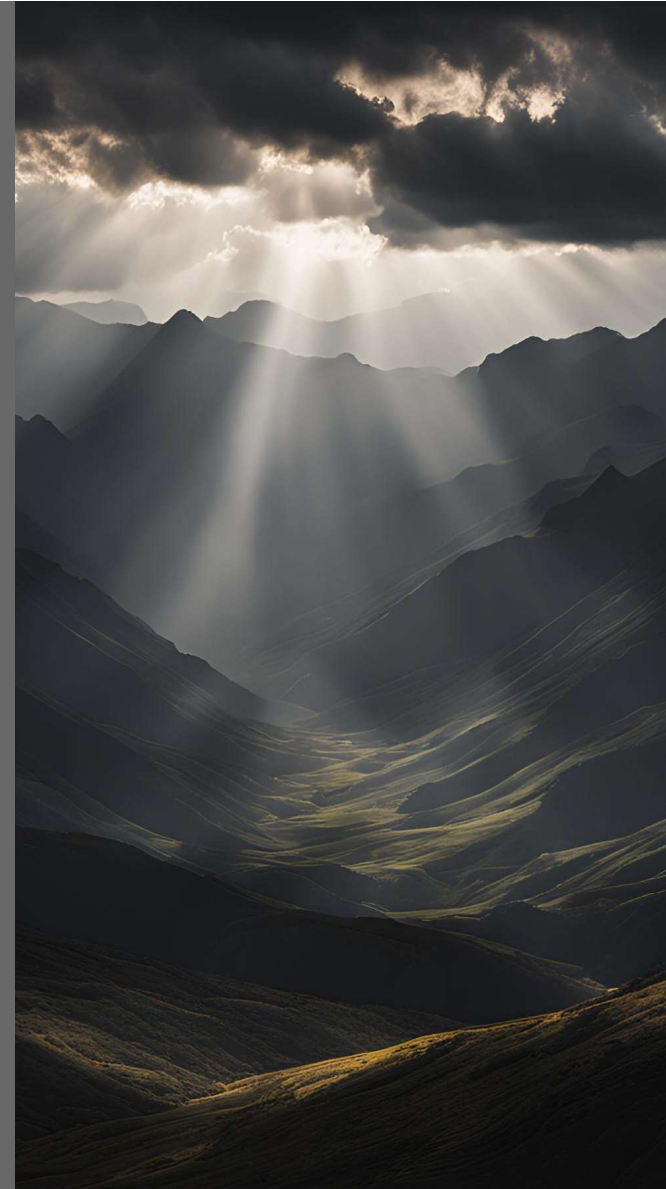
The background of the slide is a dark, atmospheric landscape featuring silhouetted mountain ranges. A bright light source, likely the sun, is positioned behind the mountains in the upper center, creating a powerful sunburst effect with rays of light fanning out across the sky. The overall color palette is dark, with deep blues, greys, and blacks, punctuated by the golden light of the sunburst.

Judges 14

10 His father went down to the woman, and **Samson prepared a feast there**, for so the young men used to do. 11 As soon as the people saw him, they brought thirty companions to be with him.

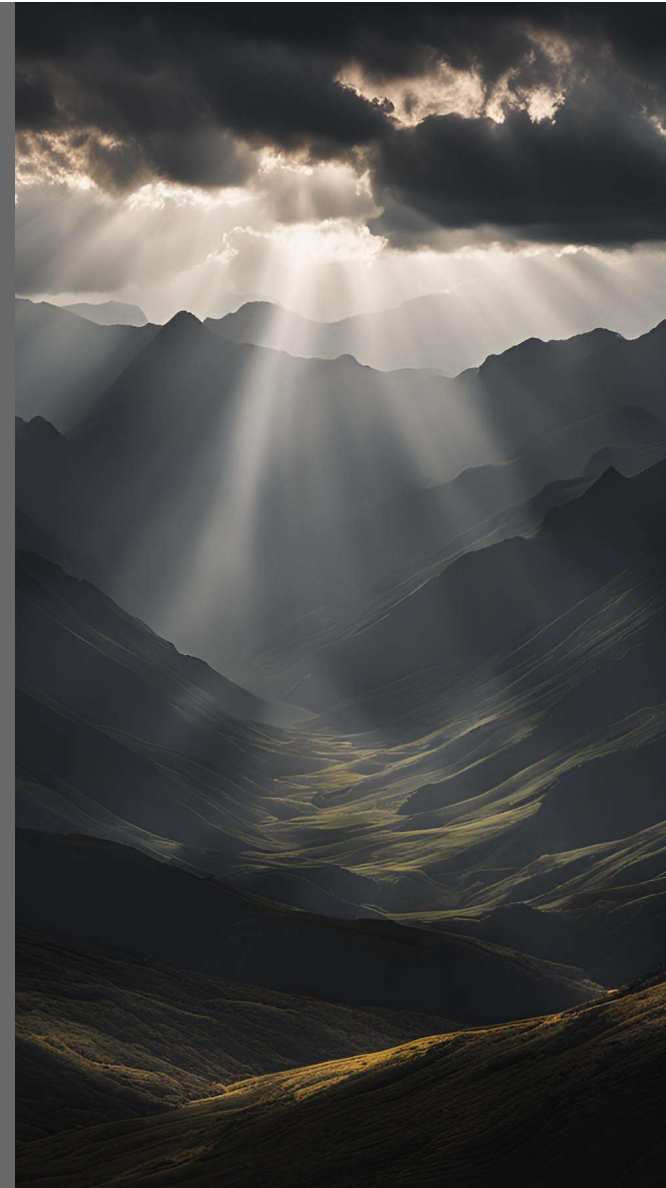
Nazerite Vow

- ☒ No Wine, Vinegar, or Grapes
- ☐ No touching a dead body
- ☒ Cannot cut his hair



Nazerite Vow

- ☒ No Wine, Vinegar, or Grapes
- ☐ No touching a dead body
- ☒ Cannot cut his hair



The background of the slide is a dark, atmospheric landscape featuring silhouetted mountain ranges. A bright light source, likely the sun, is positioned behind the mountains, creating a powerful sunburst effect with rays of light filtering through the clouds and illuminating the scene from above.

Judges 14

12 And Samson said to them, **“Let me now put a riddle to you.** If you can tell me what it is, within the seven days of the feast, and find it out, then I will give you thirty linen garments and thirty changes of clothes, 13 but if you cannot tell me what it is, then you shall give me thirty linen garments and thirty changes of clothes.” And they said to him, “Put your riddle, that we may hear it.”

The background of the slide is a dark, atmospheric landscape featuring silhouetted mountain ranges. A bright light source, likely the sun, is positioned behind the mountains in the upper center, creating a powerful sunburst effect with rays of light fanning out across the sky. The overall color palette is dark, with shades of grey, black, and muted blue, punctuated by the bright white and yellow of the light and text.

Judges 14

14 And he said to them,

**“Out of the eater came something to eat.
Out of the strong came something sweet.”**

And in three days they could not solve the riddle.

The background of the slide is a dark, atmospheric landscape featuring silhouetted mountain ranges. A bright light source, likely the sun, is positioned behind the mountains in the upper center, creating a powerful sunburst effect with rays of light filtering through the clouds. The overall color palette is dark, with shades of grey, black, and muted blue, punctuated by the bright white and yellow of the light source.

Judges 14

15 On the fourth day they said to Samson's wife,
“**Entice your husband to tell us what the riddle is,
lest we burn you and your father's house with
fire.** Have you invited us here to impoverish us?”

The background of the slide is a dark, atmospheric landscape featuring silhouetted mountain ranges. A bright light source, likely the sun, is positioned behind the mountains in the upper center, creating a powerful sunburst effect with rays of light extending across the sky. The overall color palette is dark, with shades of grey, black, and muted blue, punctuated by the bright white and yellow of the light and text.

Judges 14

16 And Samson's wife wept over him and said, **“You only hate me; you do not love me. You have put a riddle to my people, and you have not told me what it is.”** And he said to her, “Behold, I have not told my father nor my mother, and shall I tell you?”

Judges 14

17 She wept before him the seven days that their feast lasted, and on the seventh day he told her, because she pressed him hard. Then she told the riddle to her people. **18** And the men of the city said to him on the seventh day before the sun went down,
“What is sweeter than honey?
What is stronger than a lion?”

The background of the slide is a dark, atmospheric landscape featuring silhouetted mountains under a sky with a bright sunburst or light rays breaking through clouds. The overall tone is dramatic and spiritual.

Judges 14

And he said to them,
“If you had not plowed with my heifer,
you would not have found out my riddle.”

19 And the Spirit of the Lord rushed upon him, and he
went down to Ashkelon and struck down thirty men of
the town and took their spoil and gave the garments to
those who had told the riddle.

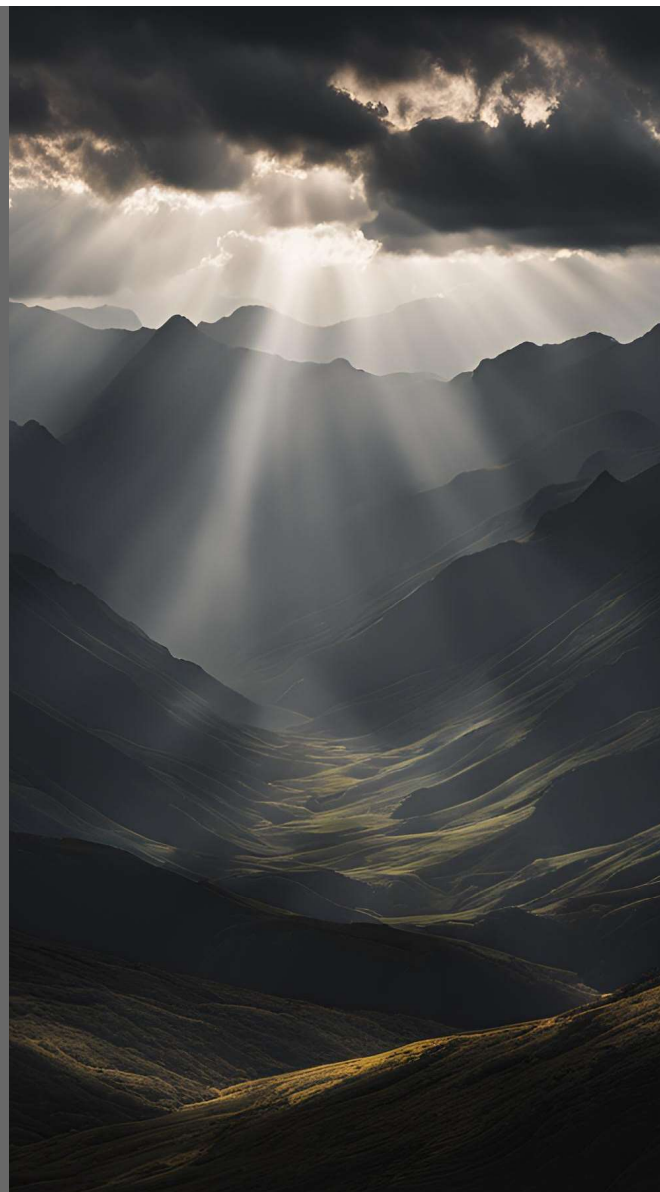
A dramatic landscape featuring a range of dark, silhouetted mountains under a sky with heavy clouds. Sunbeams are streaming down from a break in the clouds, creating a powerful and atmospheric scene. The overall tone is somber and majestic.

Judges 14

In hot anger he went back to his father's house. 20 And Samson's wife was given to his companion, who had been his best man.

So What?

- God uses sinners to accomplish His will
- Our failures do not negate God's goodness
- We become like those we surround ourselves with





Write your topic or idea

Briefly elaborate on what you want to discuss.

TIME OF GIVING

Online giving is also available on our church website,
www.westmiddlebury.org, and on our Tithely app.

Offering boxes are
available at both entrances.

2 Corinthians 9:7

